

# AntCF-2: Climate Monitoring *(November 2025 – April 2026)*

Vasily Smolyanitsky <sup>1</sup>

<sup>1</sup>*Arctic and Antarctic Research Institute (AARI)*



**WMO OMM**

World Meteorological Organization

Organisation météorologique mondiale

# Content of the Antarctic seasonal review for Nov 2025 – Apr 2026

## ❖ Atmosphere

- Atmospheric circulation (ERA5 reanalysis)
- Surface air temperature (ERA5 reanalysis and Observations at stations)
- Precipitation (ERA5 reanalysis)

## ❖ Sea ice

- Sea ice conditions: SIC, SoD, ice edge, ice age (ice charting and JAXA AMSR2)
- Sea Ice extent, including Feb 2026 austral summer minimum (NSIDC SIC passive microwave)

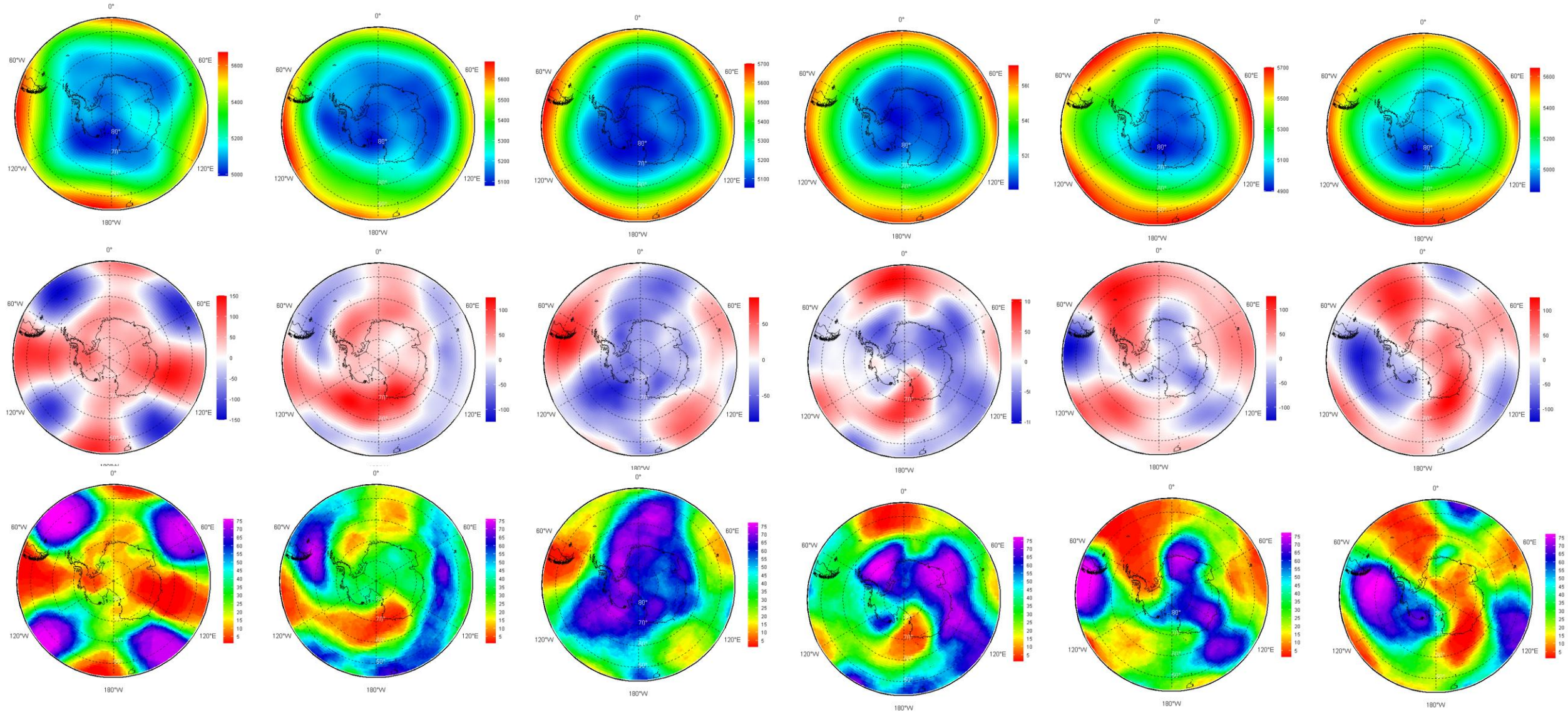
## ❖ Polar Ocean and land ice surface heat content (ERA5 reanalysis)

- SST + STL3 (surface 28-100 cm layer temperature)

## ❖ Information

- based on polar stations (WMO GTS), ERA5 reanalysis, AARI/US NIC sea ice analysis and NSIDC SIC and JAXA AMSR2 passive microwave patterns
- anomalies – relative to the latest **3<sup>rd</sup> WMO period 1991-2020**,
- ranks – relative to period of reanalysis (**1950-2025/2026**) or sea ice analysis (**1979...2026**)
- graphics produced by AARI

# Atmosphere 2025/2026: monthly upper circulation (H500 hPa height) val/anom/rank



November

December

January

February

March

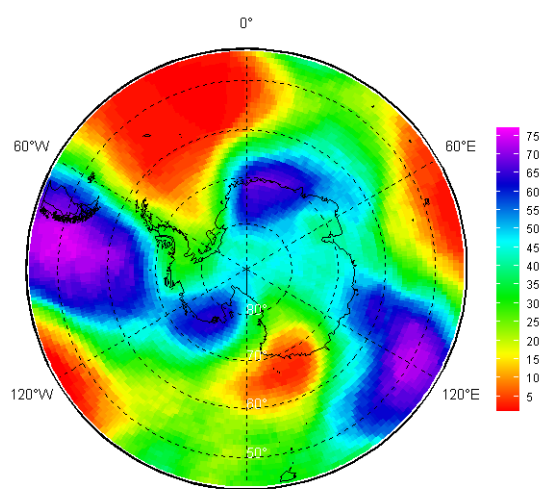
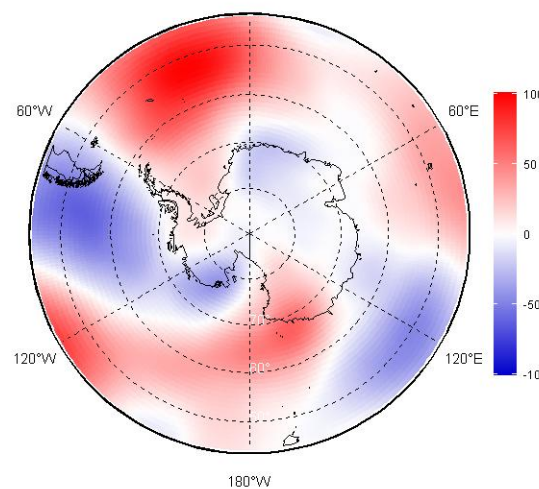
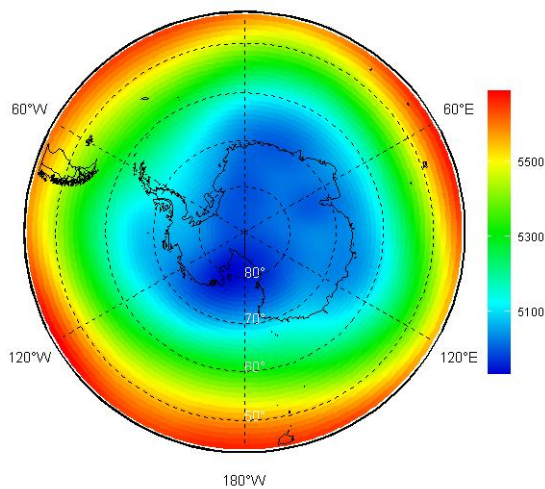
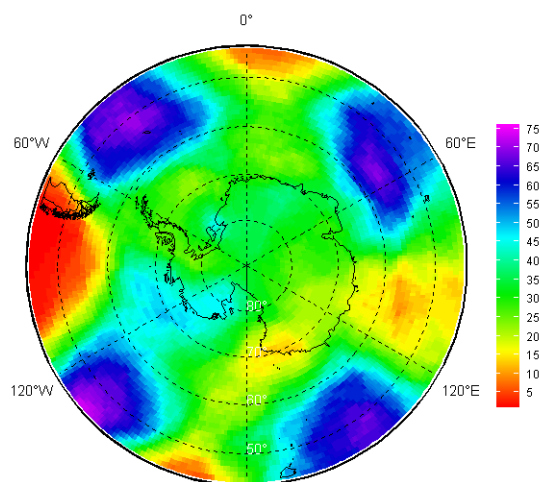
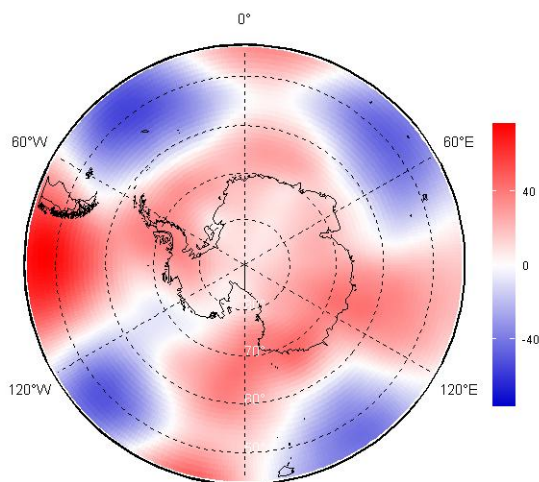
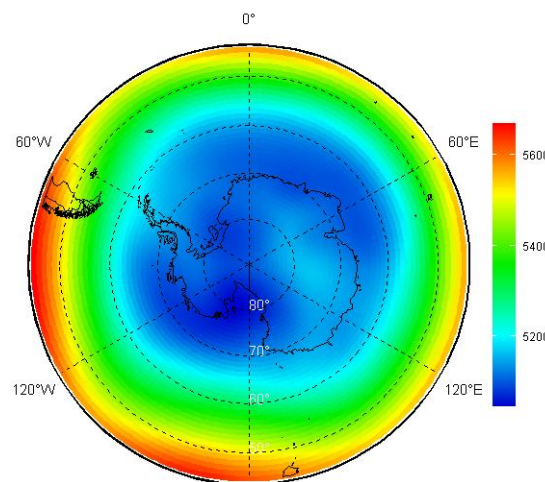
April

# Atmosphere 2025/2026: seasonal upper circulation (H500 hPa height) val/anom/rank

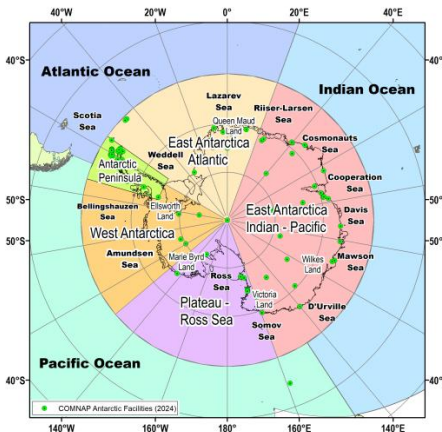
### Value

### Anom (1991-2020)

### Rank

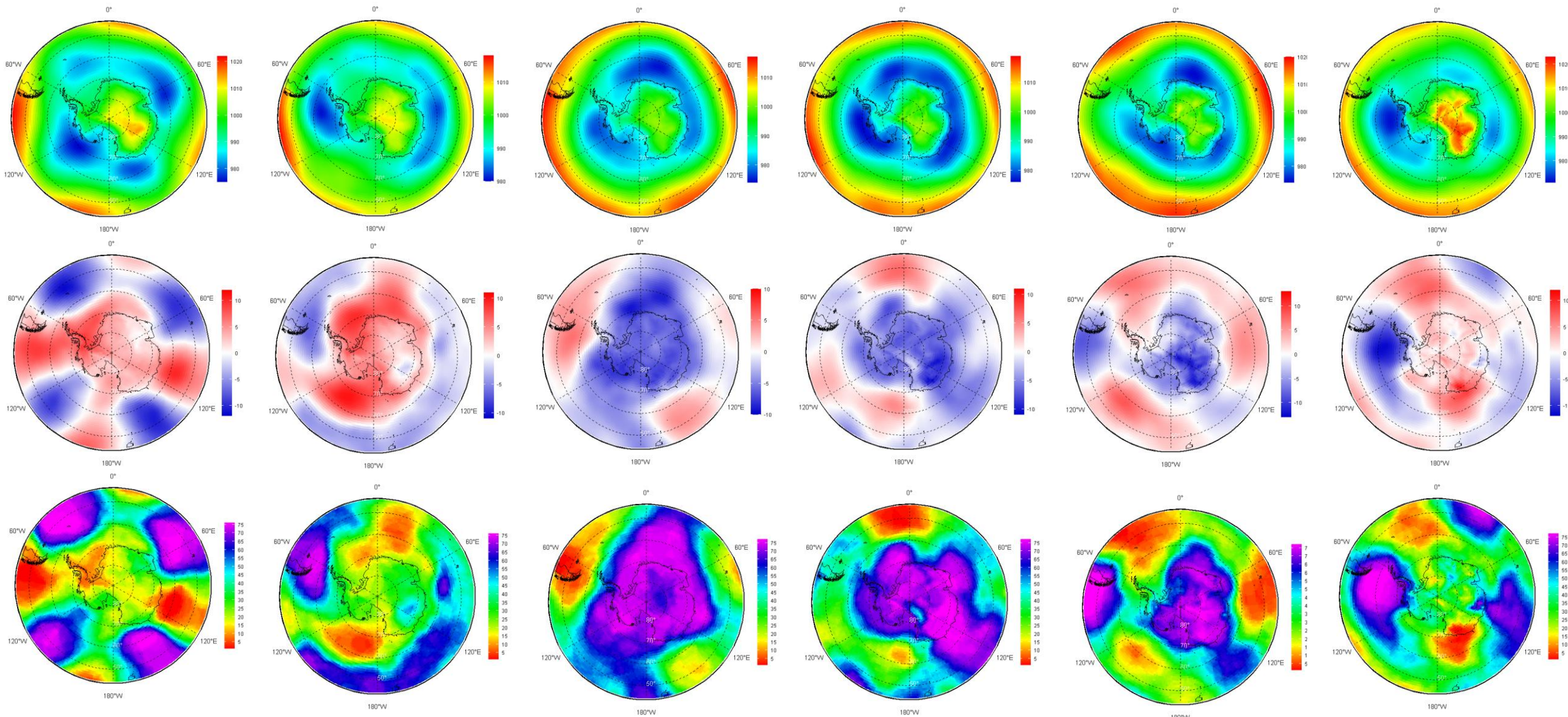


### NDJ 2025/2026



### FMA 2026

# Atmosphere 2025/2026: monthly surface circulation (MSLP HPa) val/anom/rank



November

December

January

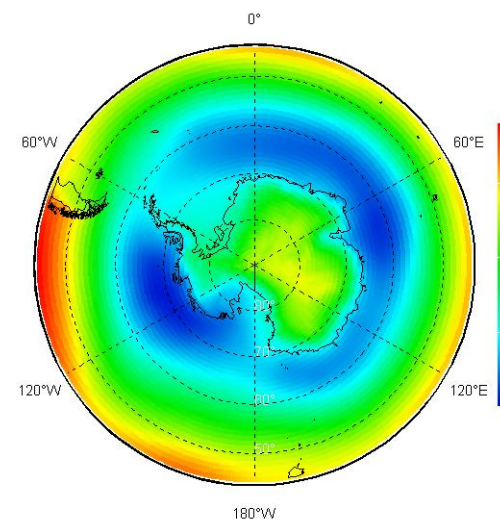
February

March

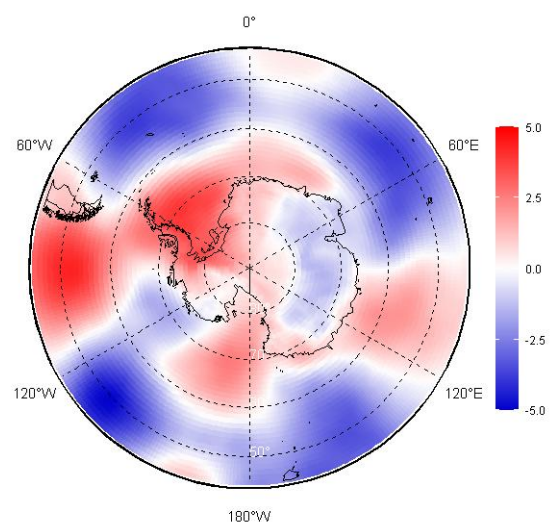
April

# Atmosphere 2025/2026: seasonal surface circulation (MSLP HPa) val/anom/rank

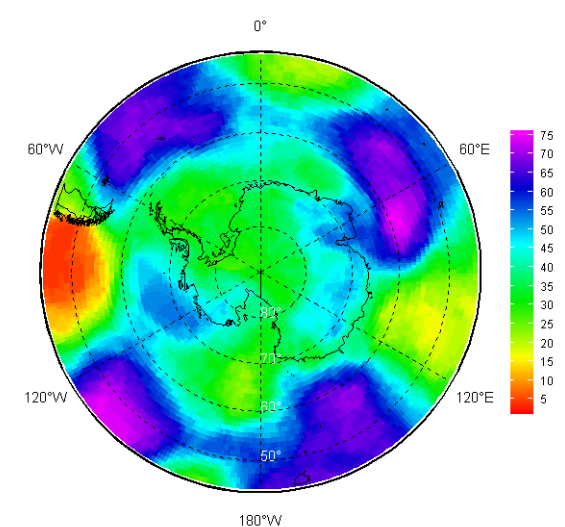
### Value



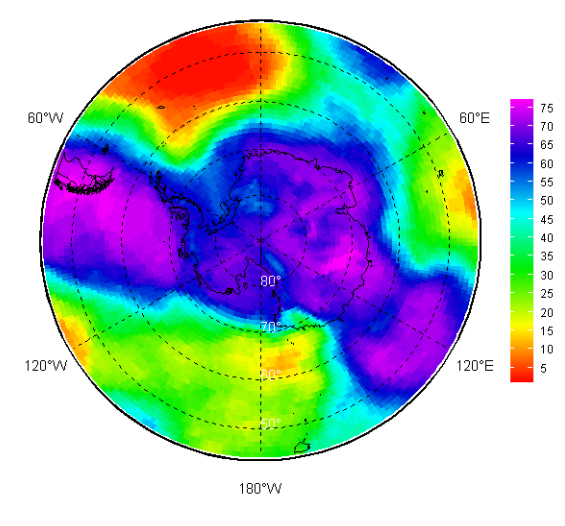
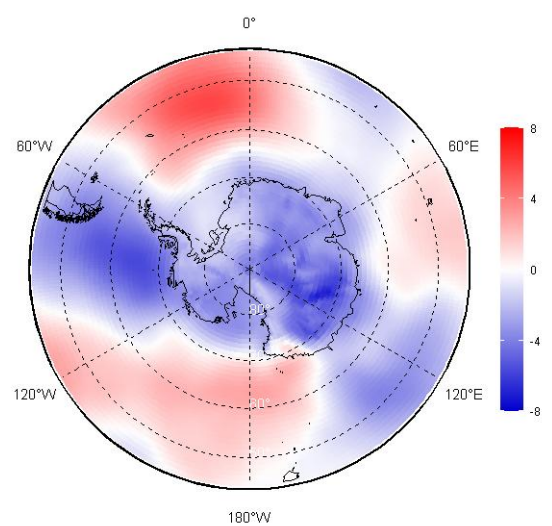
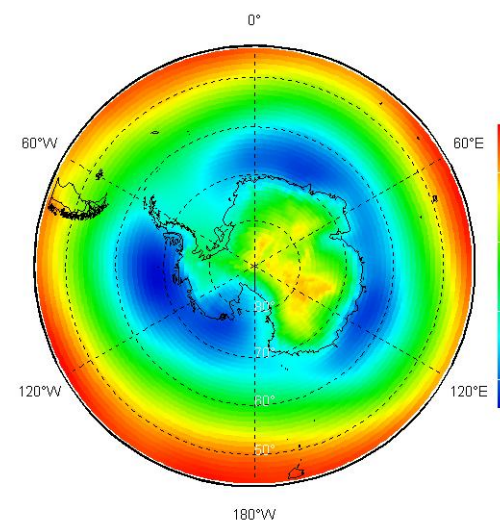
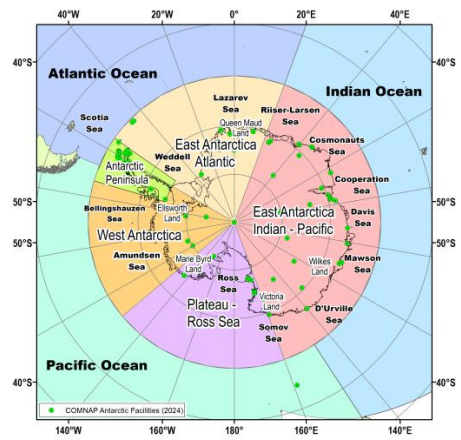
### Anom (1991-2020)



### Rank

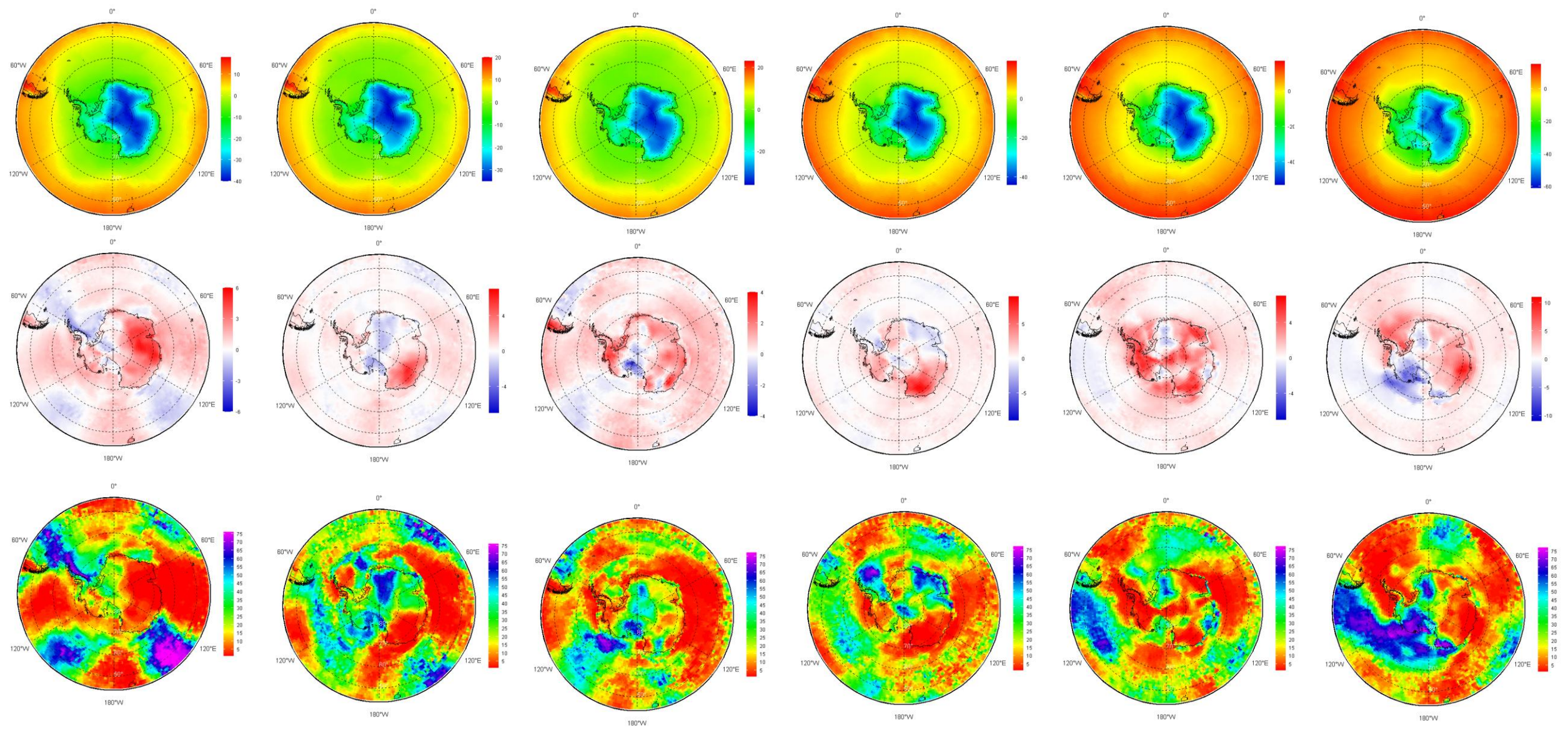


### NDJ 2025/2026



### FMA 2026

# Atmosphere 2025/2026: monthly surface air temperature (SAT 2m), degrees, val/anom/rank



November

December

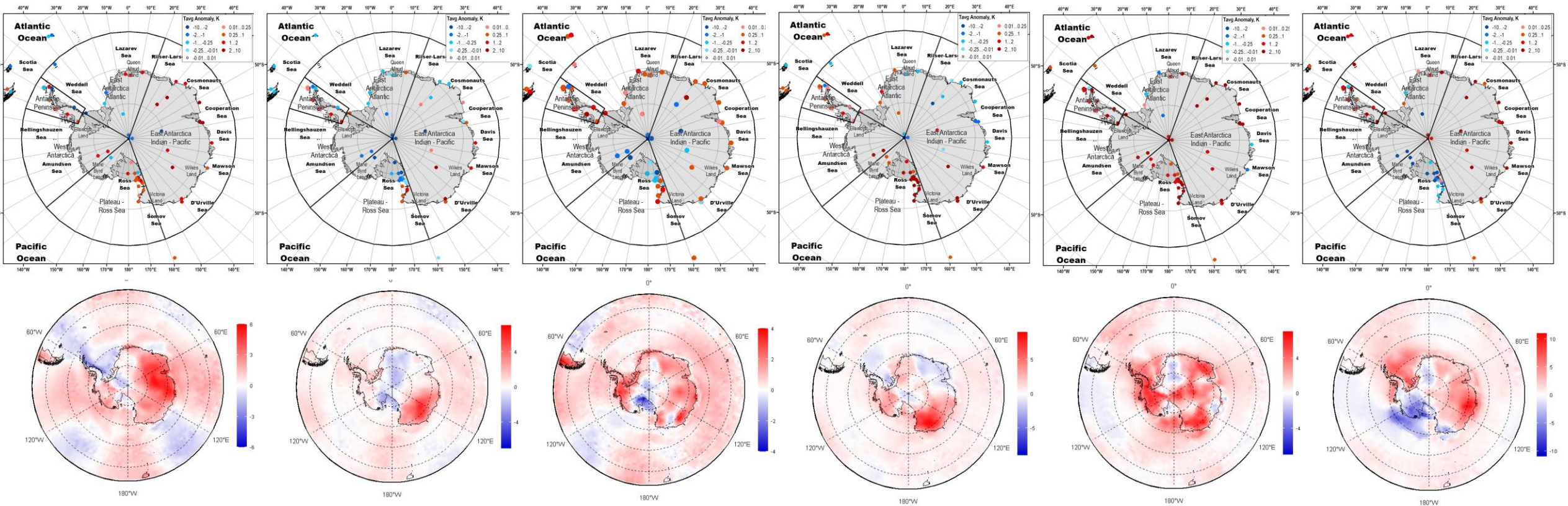
January

February

March

April

# Atmosphere 2025/2026: monthly surface air temperature (SAT 2m) – reanalysis verification (anom)



November

December

January

February

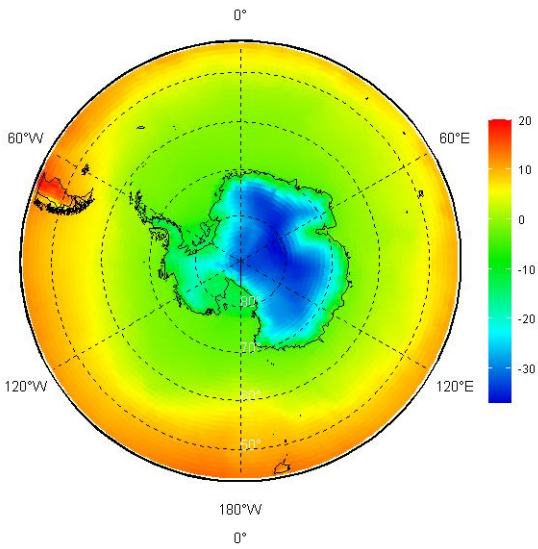
March

April

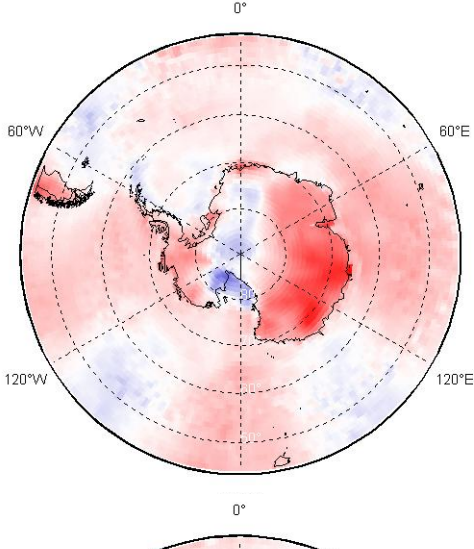
SAT 2m anomaly (to reference period 1991-2020) at the stations is based on monthly averaged mean daily data. Quality flags and gaps within reference period are not taken into account.

# Atmosphere 2025/2026: seasonal surface air temperature (SAT 2m), degrees

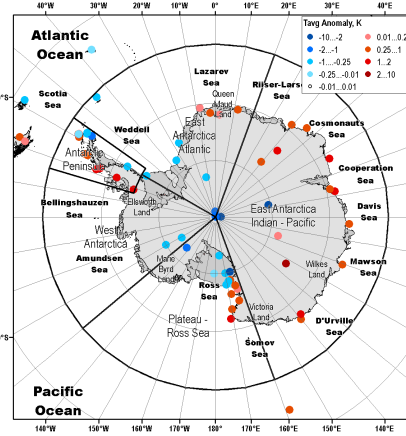
Value



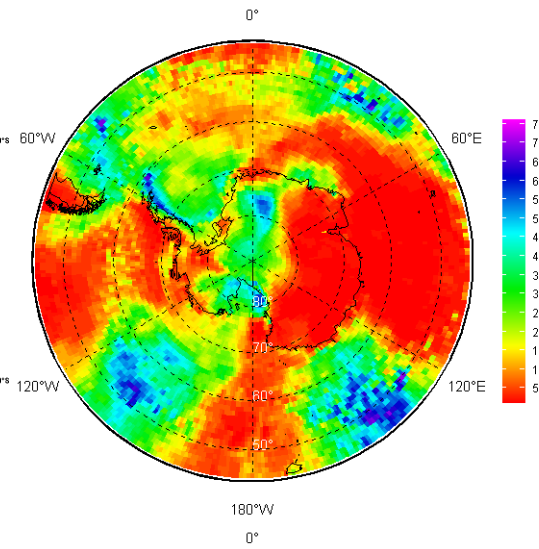
Anom (1991-2020)



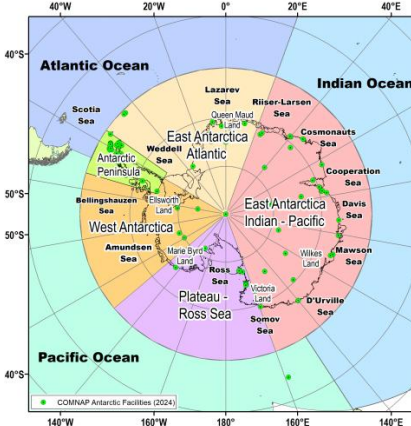
Anom<sub>obs</sub> (1991-2020)



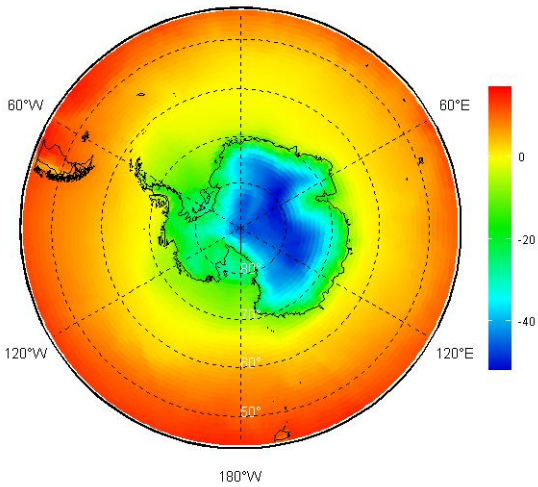
Rank



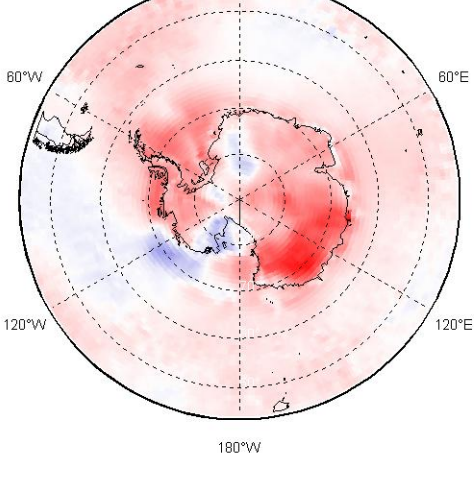
NDJ 2025/2026



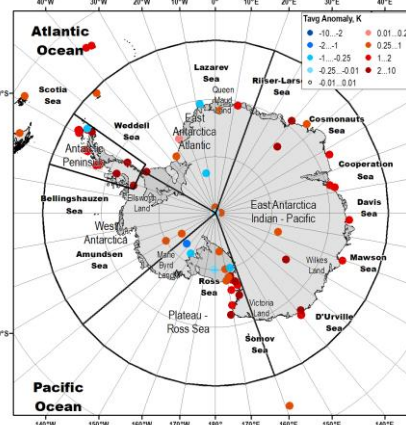
Value



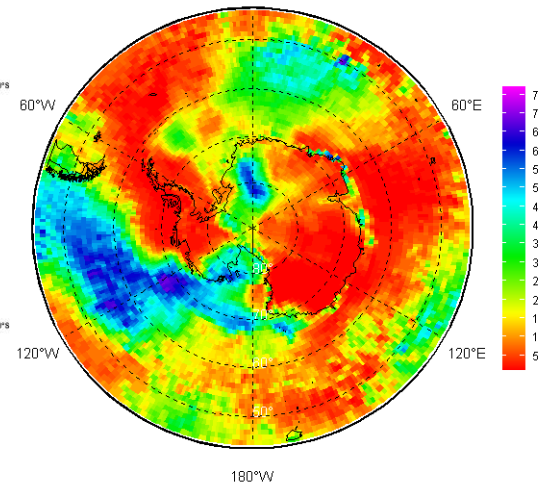
Anom (1991-2020)



Anom<sub>obs</sub> (1991-2020)

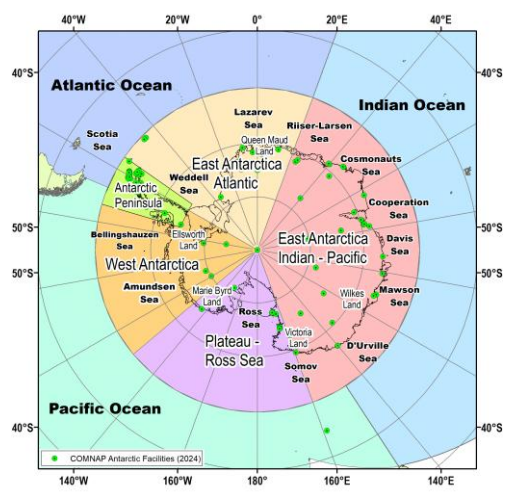
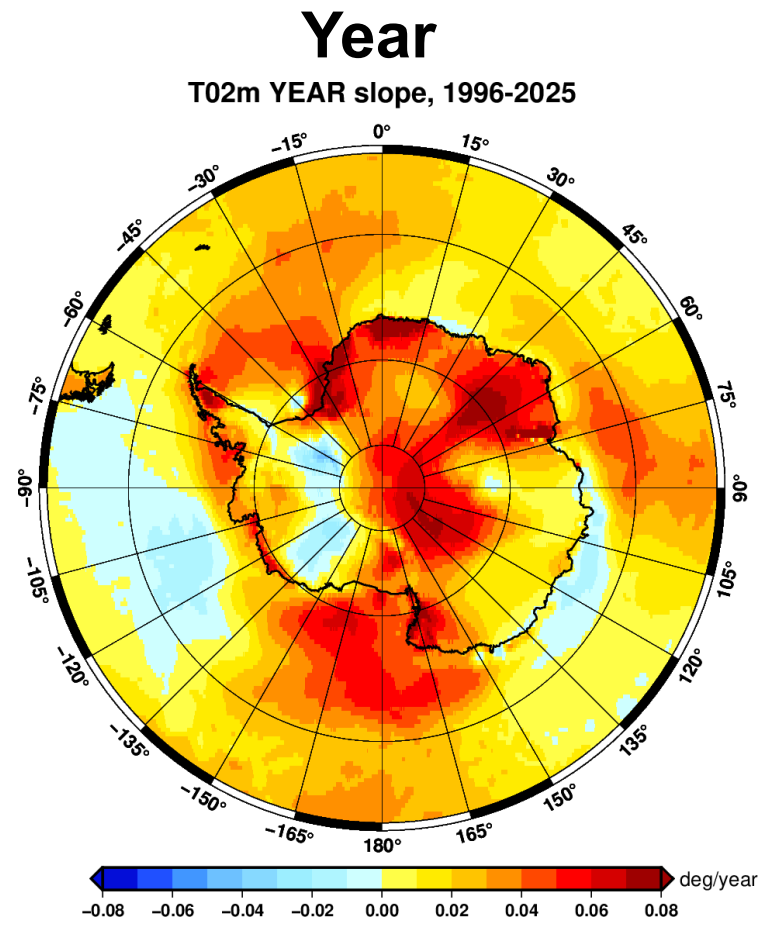
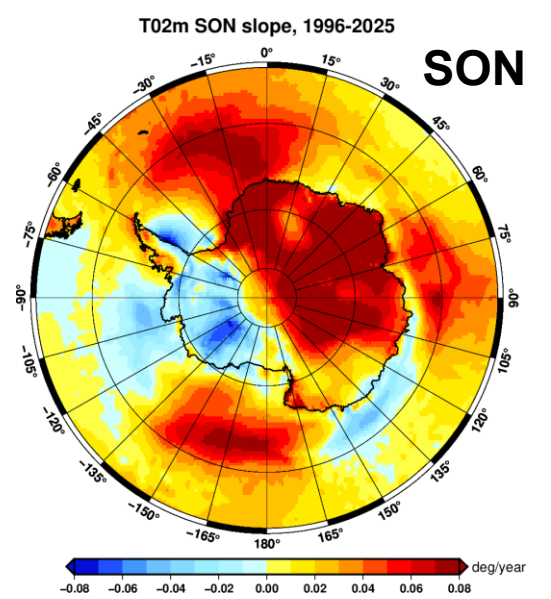
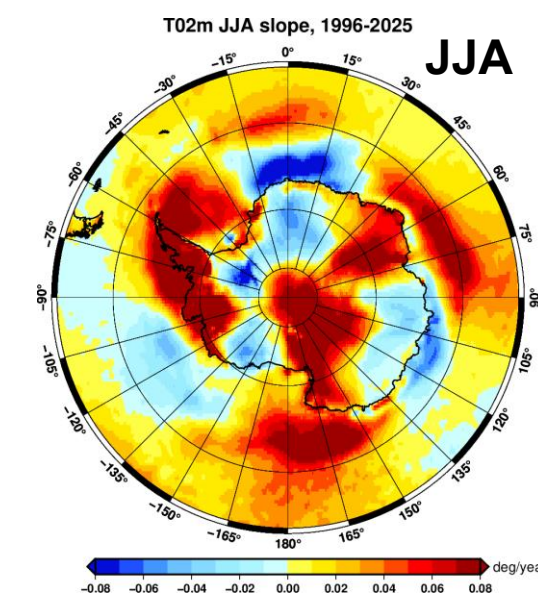
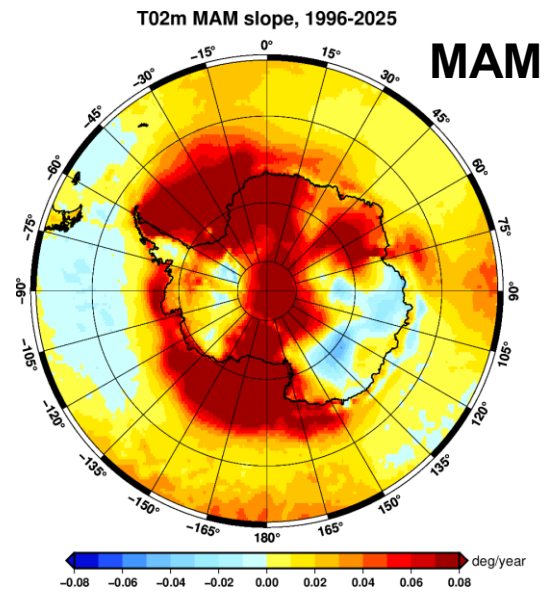
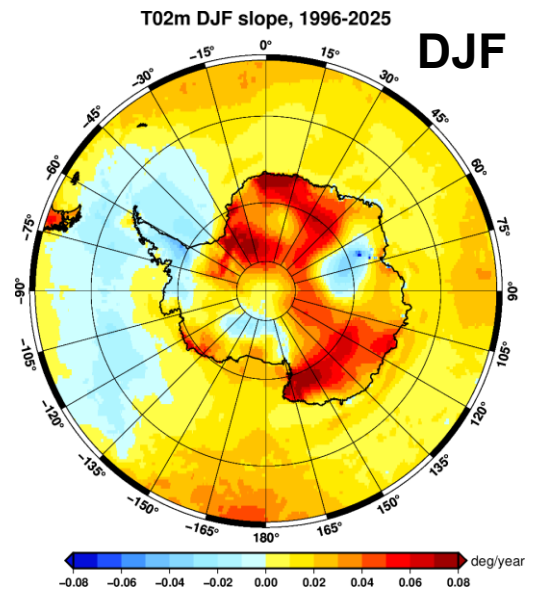


Rank

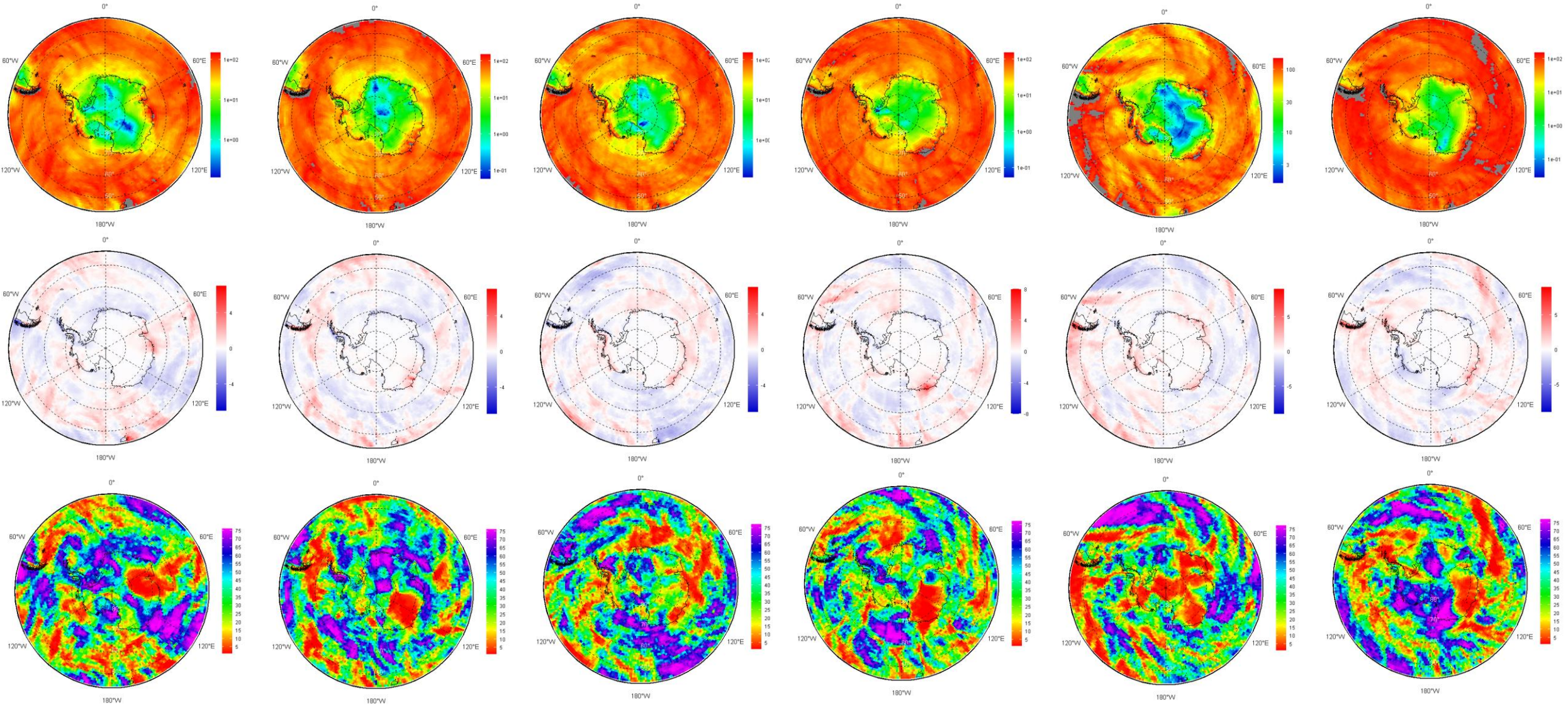


FMA 2026

# Atmosphere (climate): surface air temperature (SAT 2m), linear trend 1996-2025, deg/year



# Atmosphere 2025/2026: monthly surface precipitation, mm/mon, val/anom/rank



November

December

January

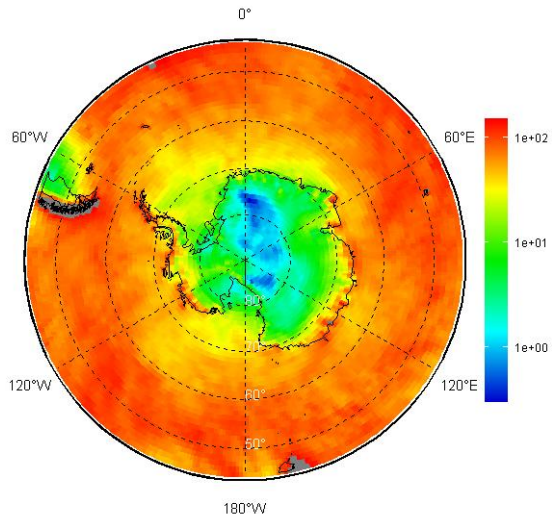
February

March

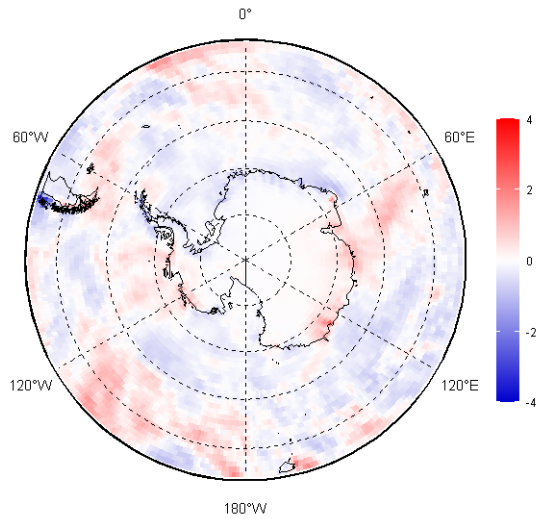
April

# Atmosphere 2025/2026: seasonal surface precipitation, mm/month

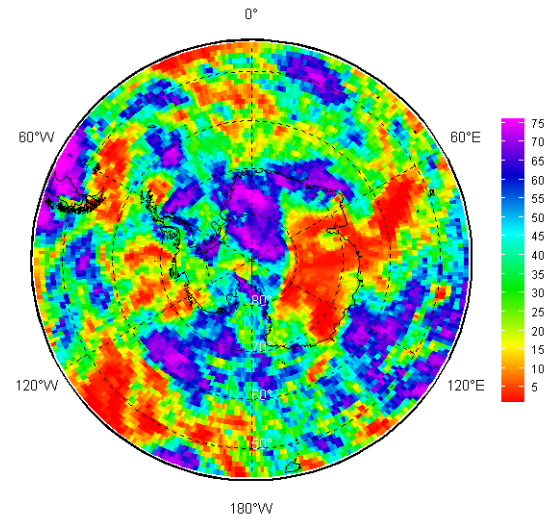
## Value



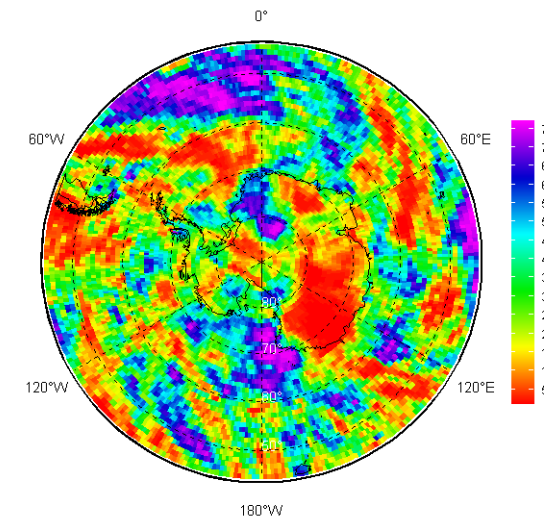
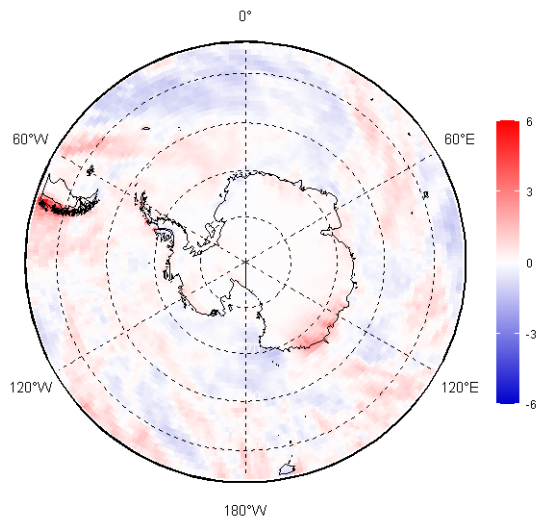
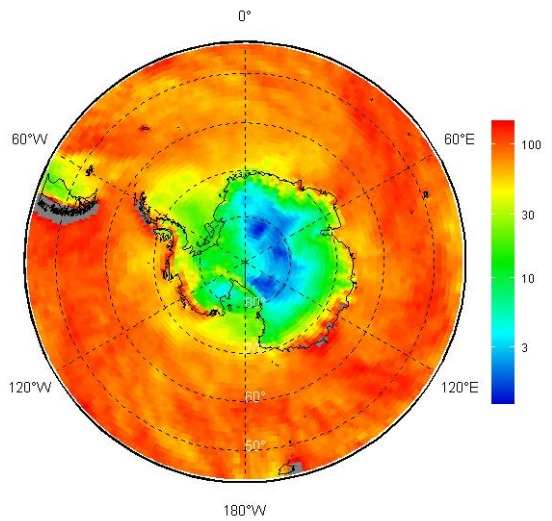
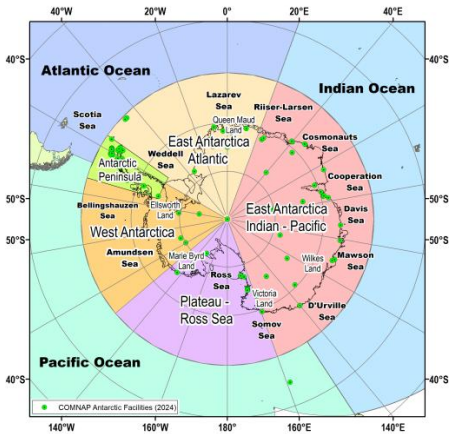
## Anom (1991-2020)



## Rank

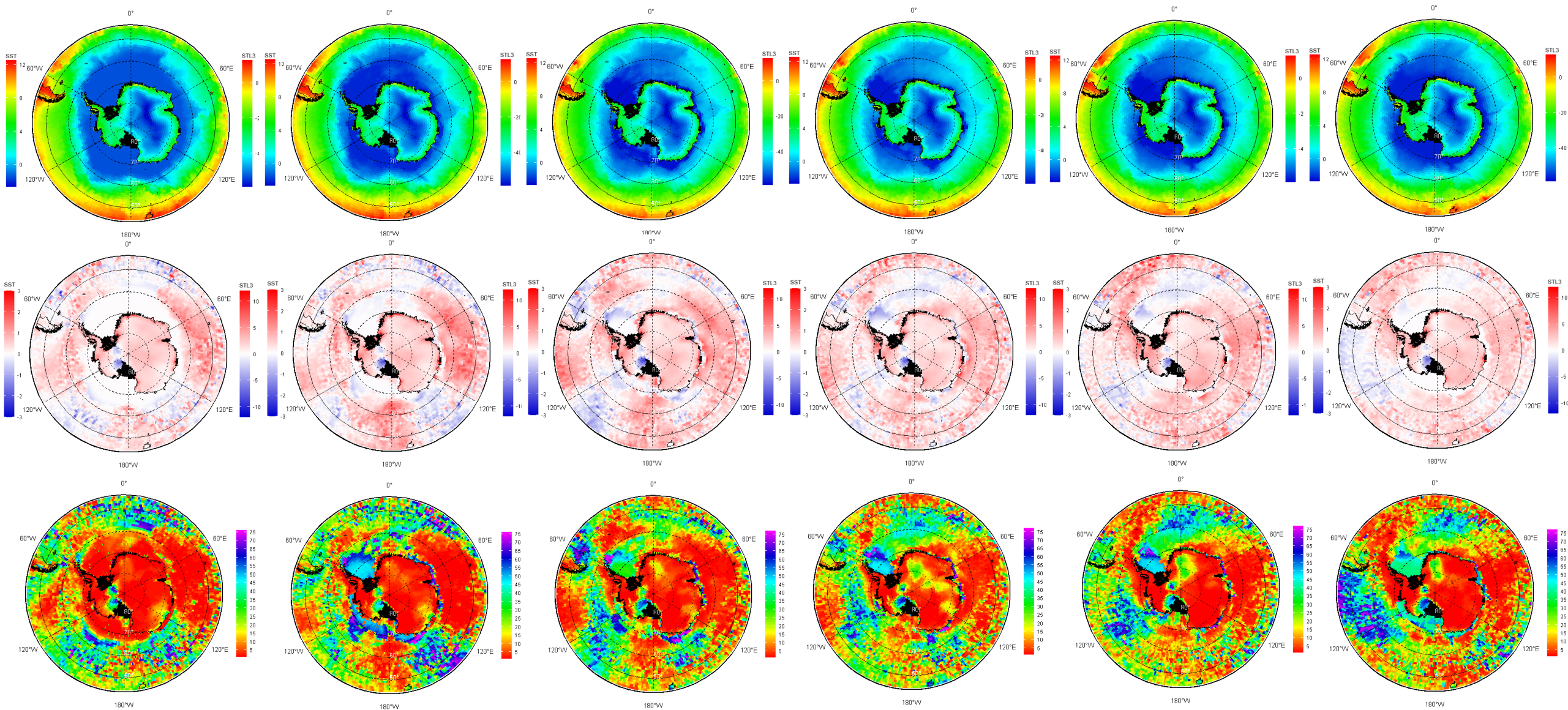


## NDJ 2025/2026



## FMA 2026

# Polar Ocean and glaciers 2025/2026: monthly SST+STL3(28-100 cm) val/anom/rank



November

December

January

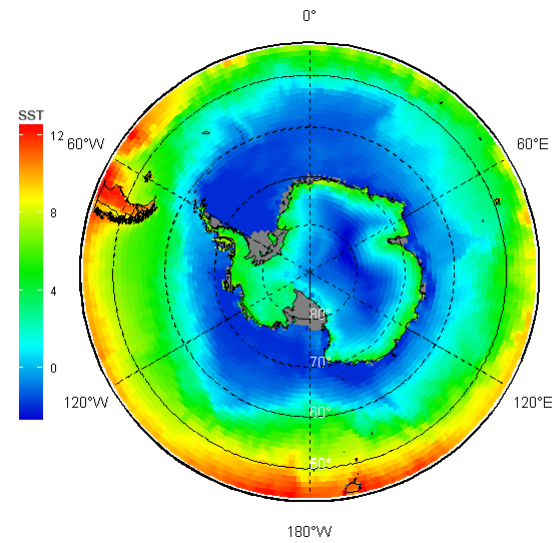
February

March

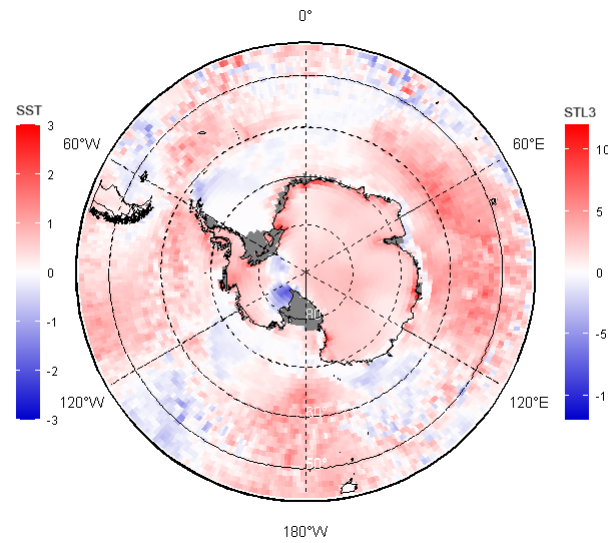
April

# Polar Ocean and glaciers 2025/2026: seasonal SST+STL3(28-100 cm)

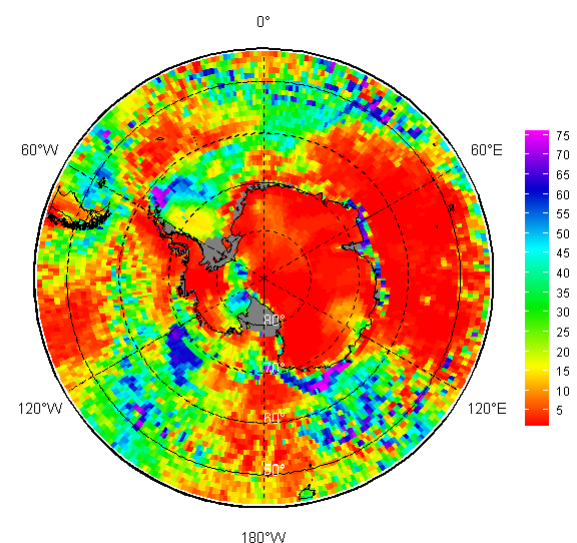
## Value



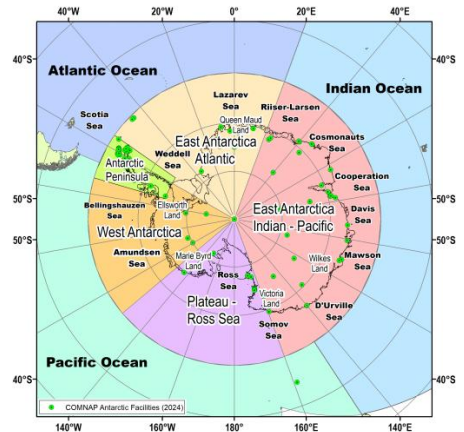
## Anom (1991-2020)



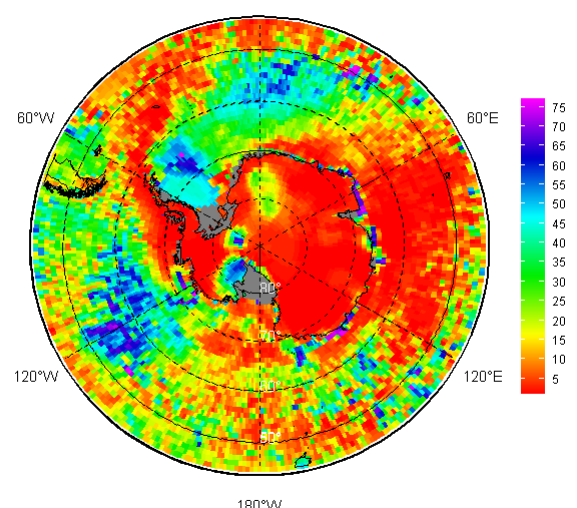
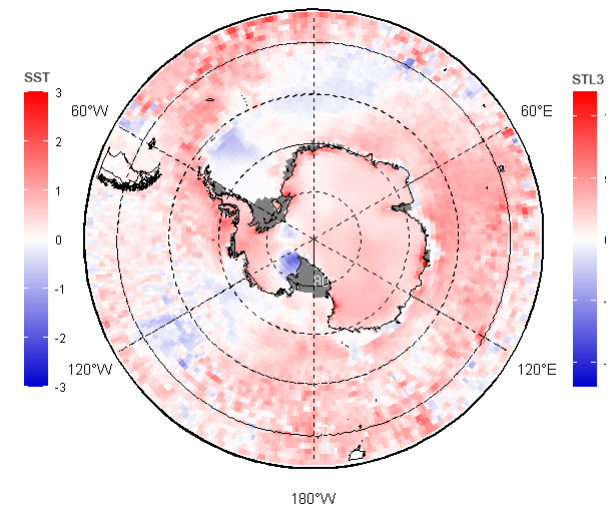
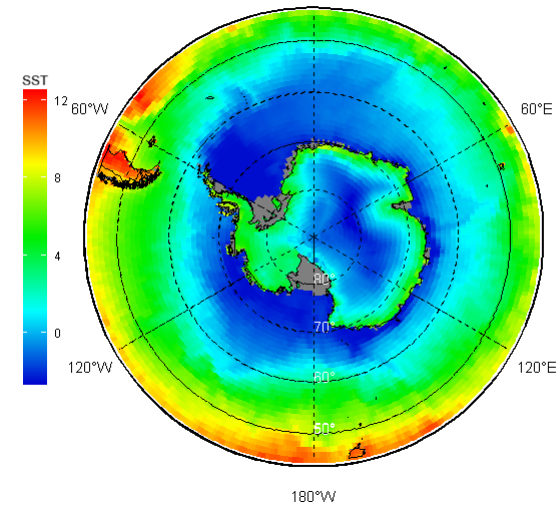
## Rank



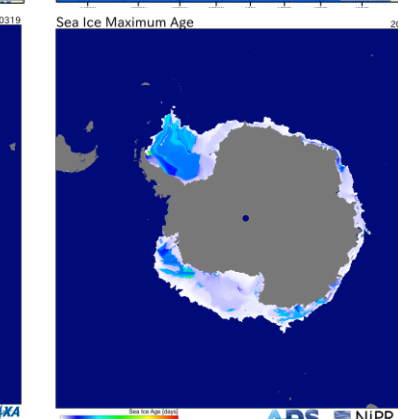
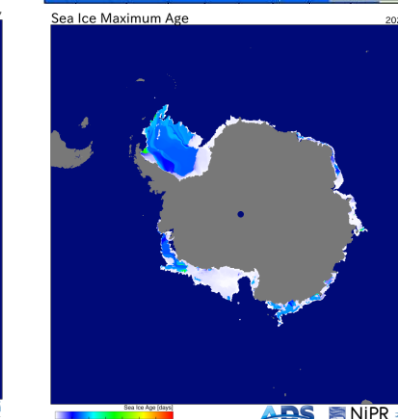
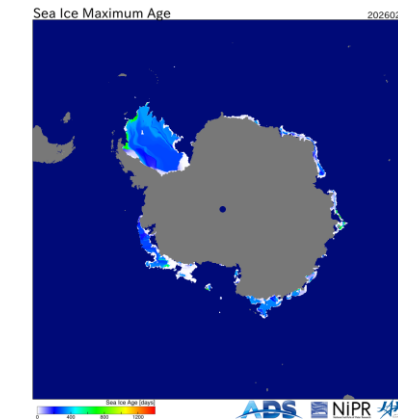
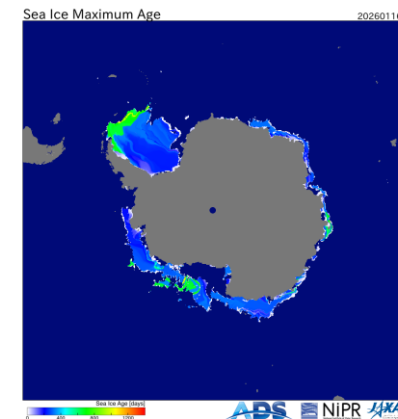
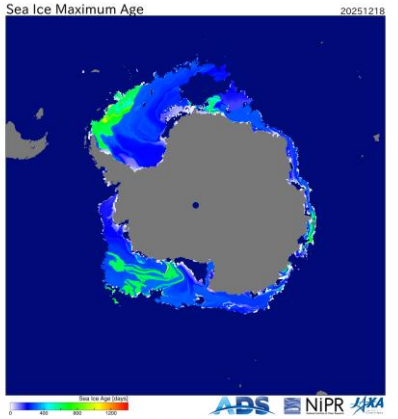
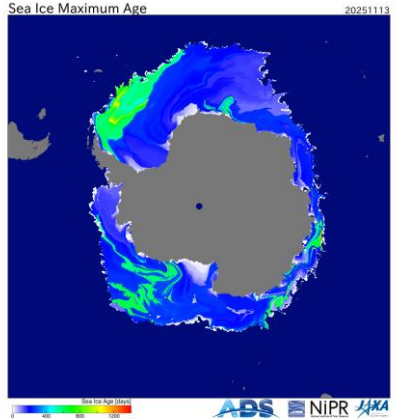
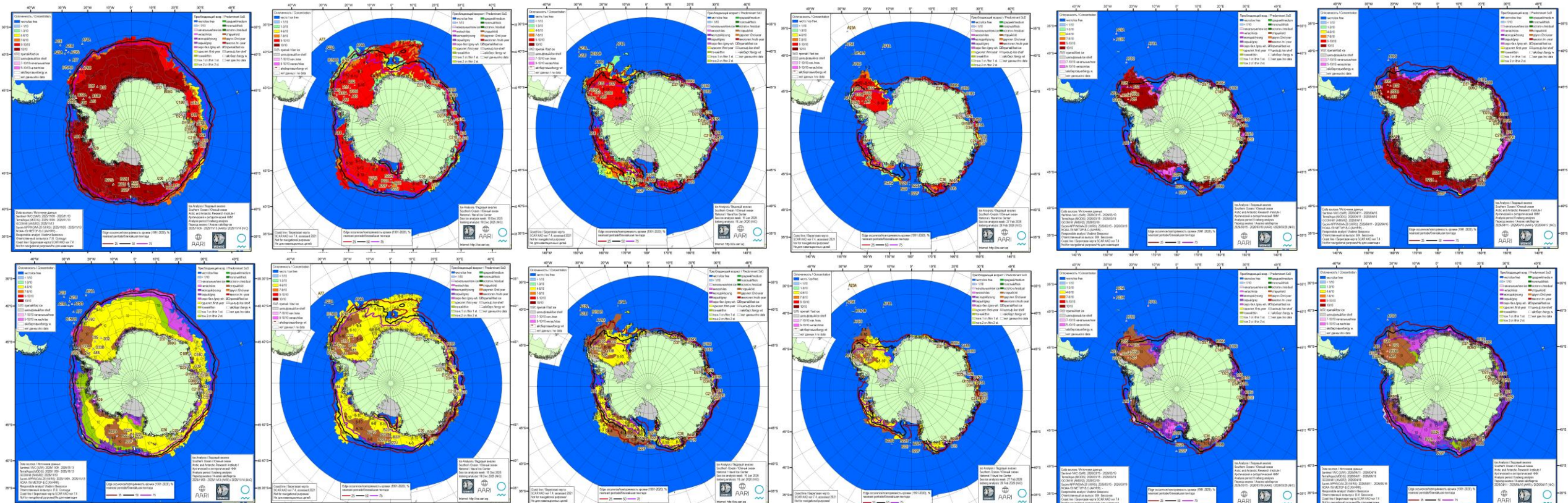
## NDJ 2025/2026



## FMA 2026



# Sea ice 2025: monthly ice conditions (CT, SoD, ice edge, ice age)



13 November

18 December

16 January

27 February

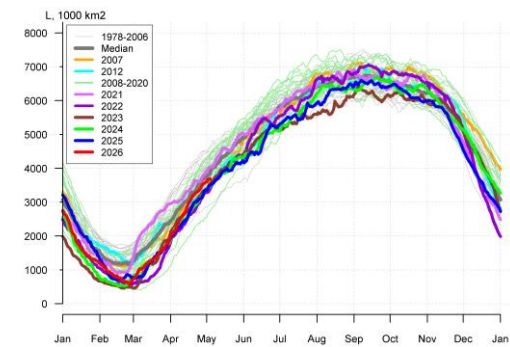
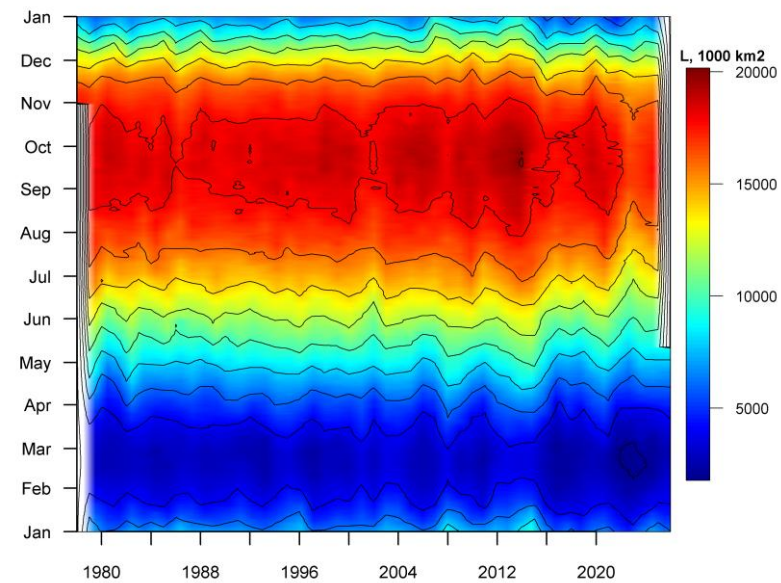
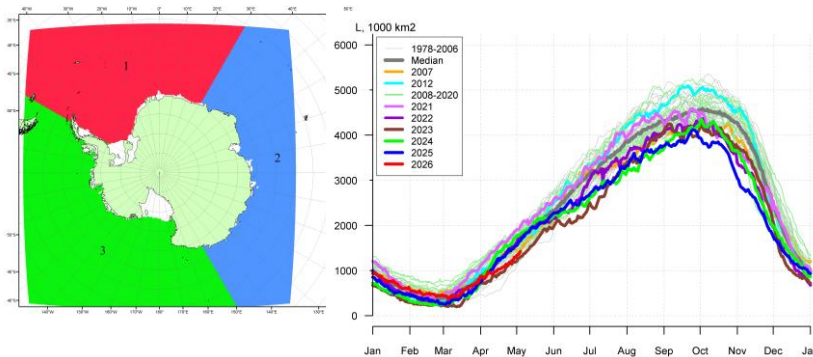
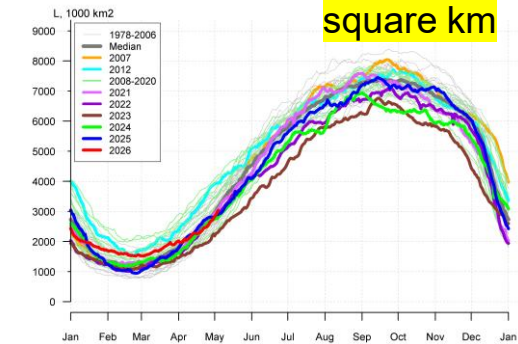
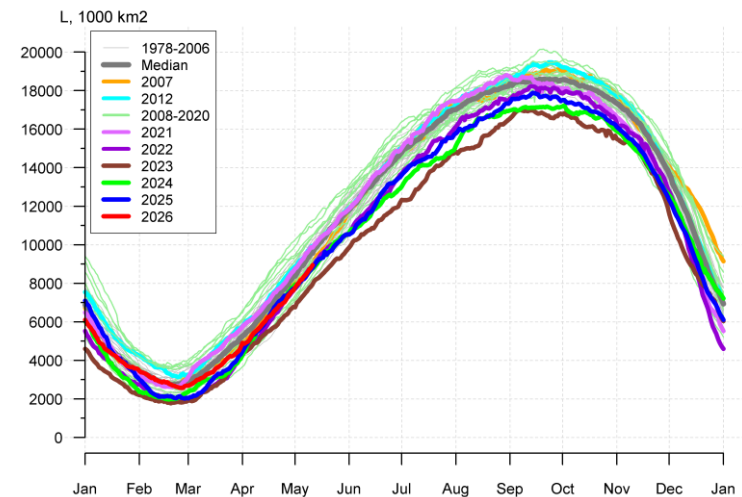
19 March

16 April

# Sea ice 2025/2026: daily sea ice extent

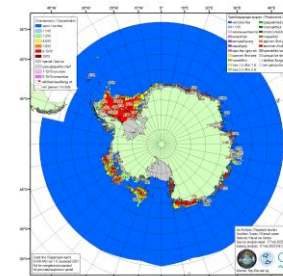
Minimum: 22-26/02/ 2026 - 2.6-2.8 million

square km

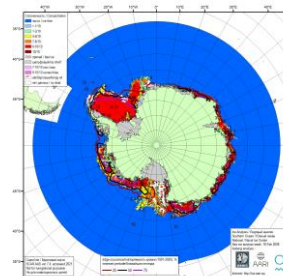


Rank	Year	SIE
1	2023	1777
2	2022	1919
3	2024	1981
4	2025	2018
5	2017	2081
6	2018	2157
...	...	...
16	2026	2577
...	...	...
23	2020	2670
...	...	...
46	2003	3633
47	2013	3664
48	2008	3707

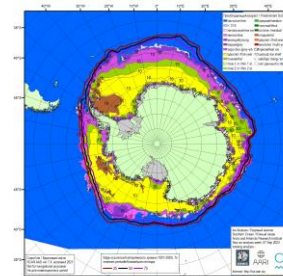
Rank	Year	SIE
1	2023	16999
2	2024	17242
3	2025	17891
4	1986	18043
5	2017	18080
6	2002	18137
7	2022	18240
8	2018	18241
...	...	...
22	2021	18726
...	...	...
45	2012	19471
46	2013	19586
47	2014	20163



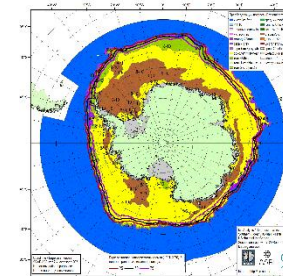
17/02/2023



18/02/2008



07/09/2023



20/09/2014