

5th Arctic Climate Forum (ACF-5)

Arctic Regional Climate Center – network (ArcRCC-N)

MAY 27-28, 2020

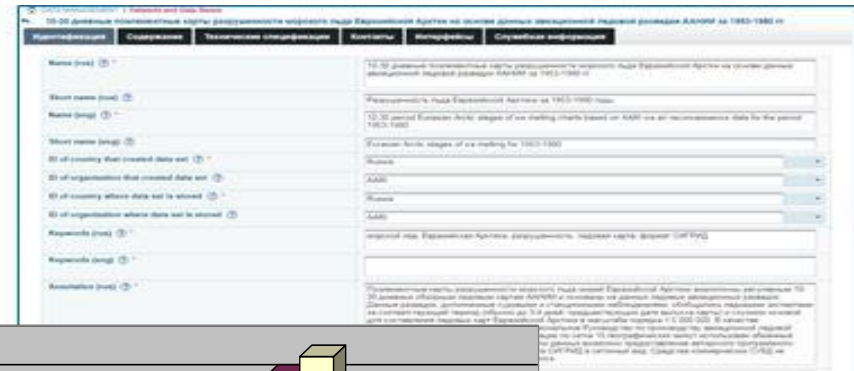
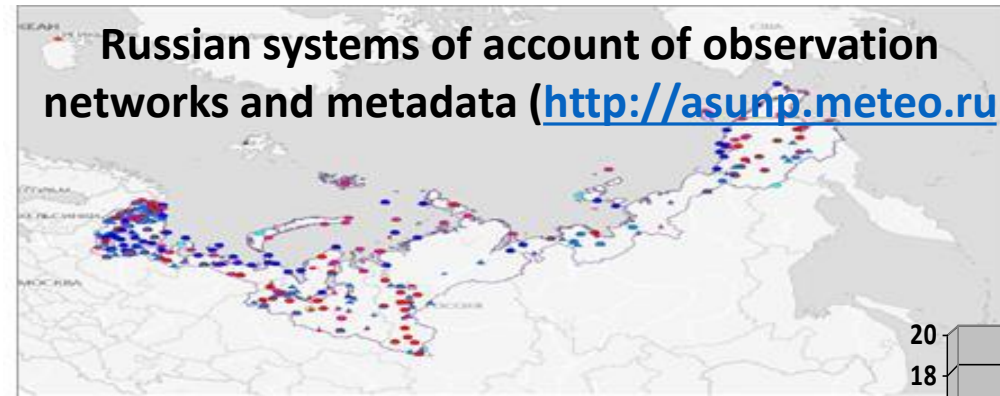
Using INTAROS project results for North Eurasia node: Access to seasonal summary data

Evgenii Viazilov, RIHMI-WDC

Assessment of Russian observing systems and databases

<http://portal.intaros.meteo.ru/portal/intaros/meta>

Russian systems of account of observation networks and metadata (<http://asunp.meteo.ru>)



Observing networks metadata

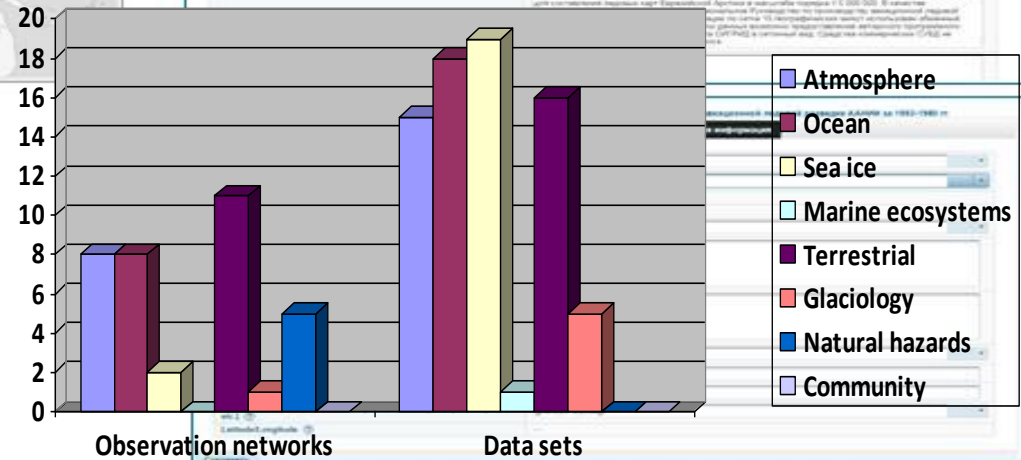
Data bases (sets) metadata



Observing Network assesment

INTAROS questionnaire (A, B, C)

Users



ID	Organization name	Organization address	Data type	Observation type	Observation start	Observation end
2711
3100
4714
4840

Integration of multidisciplinary, distributed and heterogeneous databases within iAOS-Russian Node

DATA <http://portal.intaros.meteo.ru/portal/intaros/data>
 Search for Arctic data based on specified criteria, view of metadata and data, Subscription to data and to permissions for data of the "provided on the terms of the holder" category.

Resource Search

Text: Enter a search term

Rubrics: Rubrics

Resources with WMS

Start/End Date: From To

Strictly inside the period

Select an area on the map:

Filtration

Geographical area

- Arctic Ocean (61)
- White Sea (27)
- Barentsz Sea (26)
- Kara Sea (23)
- Chuckchi Sea (20)
- Laptev (or Nordenskjold) Sea (19)

...

Availability Category

- Available for general disclosure (2)
- Information provided by a specific on the agreement with the owner

Status

- Regulated (195)
- Additional (30)
- Depreciated (1)

Resource table

(Shown 226 из 226) 1 2 3 4 5 6 7 8 9 10 20

Hazardous events and analyzes. Hazardous Storm Alerts (0) for the last 30 days (RU_RIHMI-WDC_1752)

Begin-end data: From 2020-04-21 08:45:00 To 2020-05-21 05:45:00
 Updated: 2020-05-21 05:40:4+00:00
 Status: Regulated

Operational weather observation data (SYNOP for the last day) (RU_RIHMI-WDC_1172)

Begin-end data: From 2020-05-20 09:00:00 To 2020-05-21 05:00:00
 Updated: 2020-05-21 05:33:5+00:00
 Status: Regulated

Maps of mean annual salinity in the Kara Sea at 0 m horizon (RU_RIHMI-WDC_3025)

Begin-end data: From 1900-01-01 00:00:00 To 2009-12-31 00:00:00
 Updated: 2020-05-21 05:00:4+00:00
 Status: Regulated

Maps of mean annual water temper...

Begin-end data: From 1900-01-01 00:00:00 To 2020-05-21 05:00:4+00:00
 Updated: 2020-05-21 04:55:0+00:00
 Status: Regulated

Danger over the past 24 hours (WAR)

Begin-end data: From 2020-05-20 07:00:00 To 2020-05-21 04:55:0+00:00
 Updated: 2020-05-21 04:55:0+00:00
 Status: Regulated

Maps of mean annual air temperatu...

Metadata

ID	RU_RIHMI-WDC_3025
Title	Maps of mean annual wind speed over the Kara Sea
Description	GIS-layers with thematic maps of mean annual wind speed over the Kara Sea
Data quality information	
Datasource name	
Datasource id	RIHMI-WDC
Datasource storage type	Object data file
Additional information URL	www.esimo.ru
Keywords	Метеословия
Platform type	Offshore structure, e.g. Oil Rig
Access constraints	Available for general disclosure

Short information:

Total -226 information resources

RIHMI-WDC – 165

AARI – 59

Nansen Centre -2

Rubric

Meteo - 112

Data for river - 63

Hydrochemistry - 24

Ice - 24

Function:

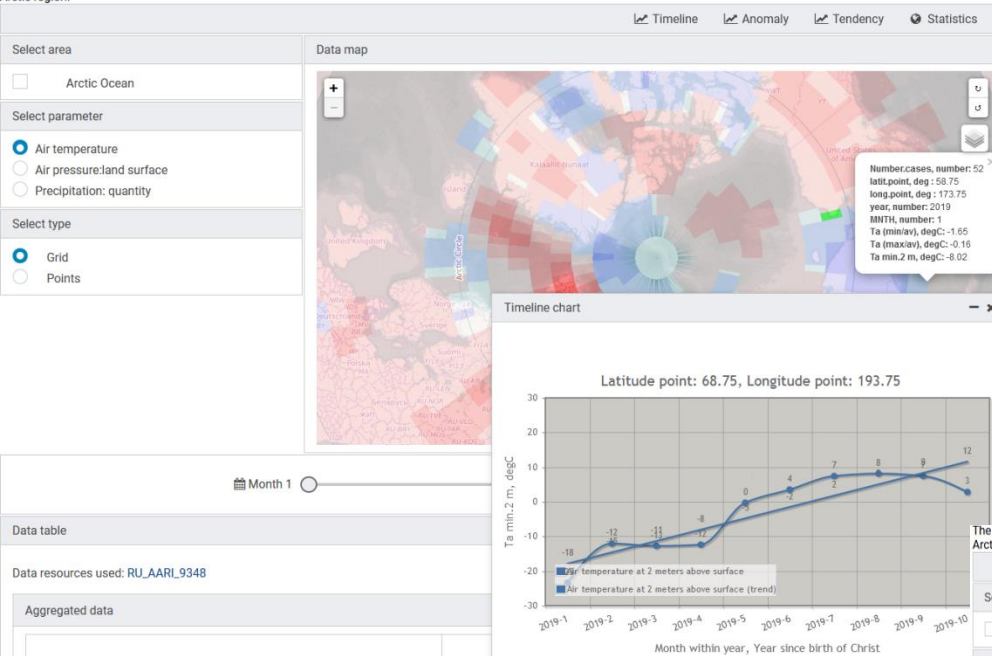
- integration data
- metadata access
- search information resources
- data access
- data exchange
- data delivery to ftp or e-mail
- visualization data (map, graphic, table)

Link for “Data Access” is on ArcRCC site <https://arctic-rcc.org>

iAOS applications for information support of marine activities in the Arctic

http://portal.intaros.meteo.ru/portal/intaros/services/climate_monitoring

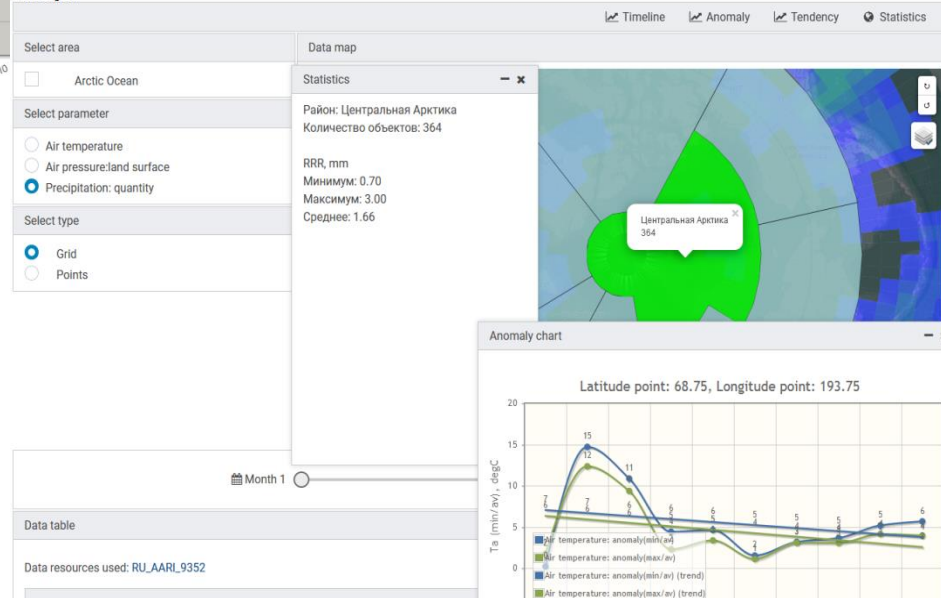
The service provides opportunities to assess the trends and dynamics of climatic changes in air temperature, pressure, precipitation, wind, ice and hydrological conditions in the seas of the Arctic region.



Applied tasks:

- Disasters and support decision
- Assessment of climate
- Monitoring of climate
- Support of Long-Range forecasts
- Hydrometeorological support of transport operations

The service provides opportunities to assess the trends and dynamics of climatic changes in air temperature, pressure, precipitation, wind, ice and hydrological conditions in the seas of the Arctic region.



Functions:

- Configuring information resources, portlets, tools, geo-area, parameters for applied tasks
- Calculation of anomalies, trends, rank, extrema, statistical characteristics by macro-regions
- Data visualization (map, graph, table)
- Preparation of materials for the report

THANK YOU FOR YOUR ATTENTION !

INTegrated ARctic Observing System (INTAROS)

EC HORIZON 2020-BG-09-2016

**Agreement between Ministry of Education and Science of Russia and
RIHMI-WDC № RFMEFI61618X0103**

The participants of project:

- All-Russian Research Institute of Hydrometeorological Information - World Data Center (RIHMI-WDC)
- Arctic and Antarctic Institute (AARI)
- Nansen International Environmental Remote Sensing Center (NIERSC)