



Environment
Canada

Environnement
Canada

Canada

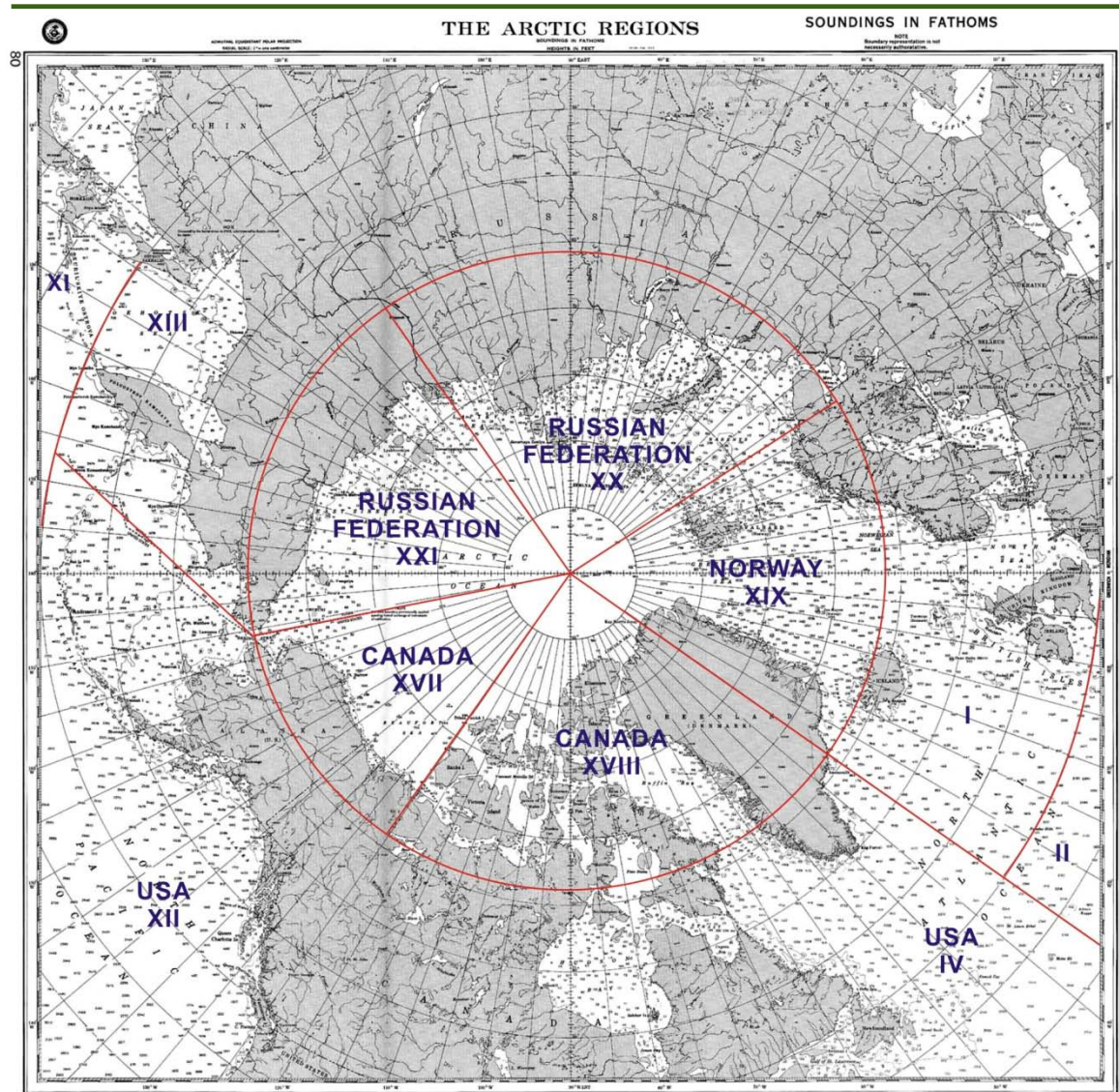
Implementation of METNAV Areas XVII and XVIII Status Report



**Dave Wartman, METAREA
Coordinator**

**Leah Braithwaite, a/Director
Canadian Ice Service
January 24, 2010**

Background



Dec 2007 – Canada accepted official recognition as the Issuing Service for marine weather forecasts and warnings for MetAreas XVII and XVIII as part of the Global Maritime Distress and Safety System (GMDSS)

Canada (Canadian Coast Guard) is Issuing (and preparation) Service for Associated NavAreas XVII and XVIII

Norway is recognized as the Issuing Service for MetArea XIX and Russia for MetAreas XX and XXI

Context and General Approach - Canada

- Arctic MetAreas are dynamic – decreasing ice cover will lead to increasing demand for weather and ice information, both temporally and spatially
- Canada's approach will be to start with existing products and increase products and services in association with increasing needs
- Anticipate that in first several years, broadcast service for weather and ice information will essentially be seasonal with “null” bulletins during the winter months



Environment
Canada

Environnement
Canada

Canada

Current Status

- Working with assistance from METArea Coordinator Henri Savina
- Preparations continue with target testing status May 2010
- Product preparation and development is underway and internal testing began Fall 2009
- Acquisition of INMARSAT-C receivers in process, work on service contract for upload to begin soon and installation planned for Spring 2010
- Broadcast of METArea information beyond 75N will be through the Canadian NAVArea issuing service - Canadian Coast Guard
- Arrangements for monitoring of METArea information has begun (acquisition of equipment)
- Facilitation of the coordination of transmissions for SafetyNET and NAVTEX with International Panels is occurring

Current Status

- Certificate of Authorization to Participate as an Information Provider in the International SafetyNET Service issued from IMO
- NAVArea, METArea, and NAVTEX coverage diagrams, including service areas and times of transmission are being developed as products and transmission times are negotiated
- Initial discussions with the United States as a Preparation Service have taken place
- Expect further conversations with American colleagues and discussions with Danish colleagues, as Preparation Services, to occur over next few months
- Discussions with Norway and Russia, for coordination and consistency across METArea boundaries, is being planned...possibly at likely GMDSS meeting in Melbourne in late April however it is hoped that some planning will take place prior to this

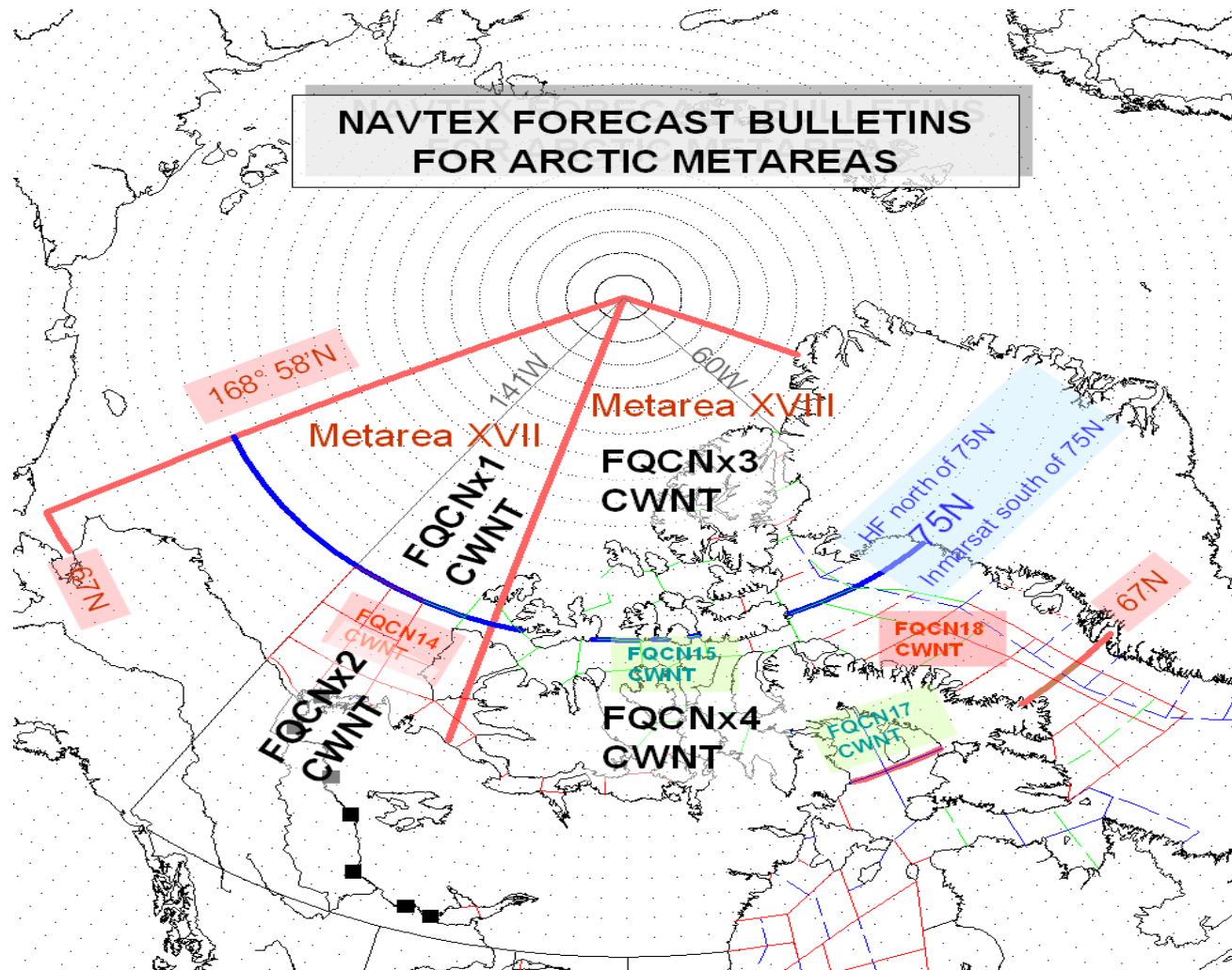


Environment
Canada

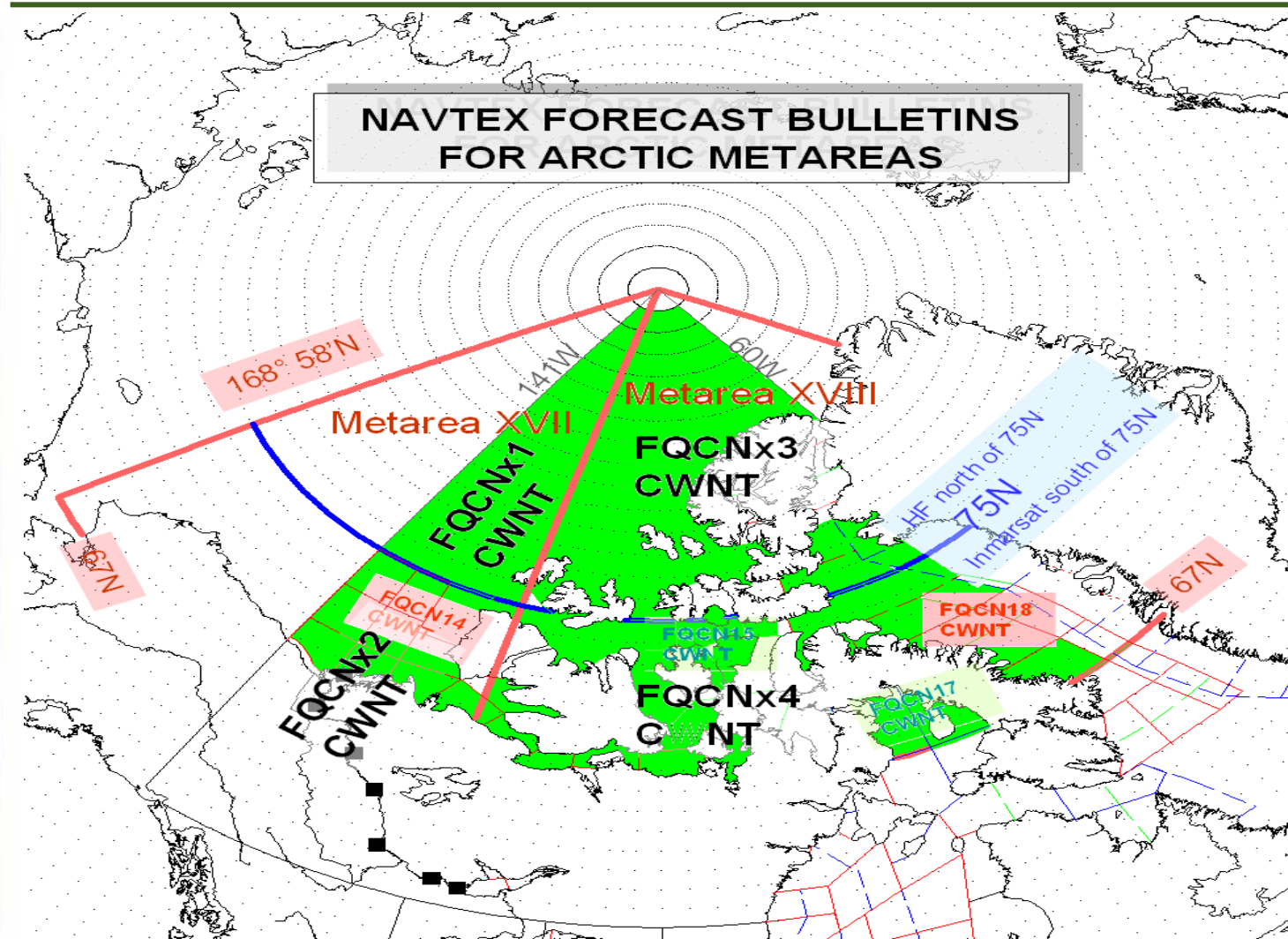
Environnement
Canada

Canada

METNAV Areas VII and VIII



Area Covered - Weather



CIS METNAV AREAS NAVTEX plan

Implementation plan

- Define number of NAVTEX bulletins and areas covered – July 2009
- NAVTEXs in place – Sept 2009
- Back up site in place – October 2009
- Review ice information from other sources – on-going
- Determine broadcast schedule - underway
- Begin Broadcasts (test period) – May 2010



Environment
Canada

Environnement
Canada

Canada

Details

- Ice edges from the three Arctic forecast bulletins for Canadian waters will be put into NAVTEX format
- An overlap 300 NM is planned between adjacent METAREAs
- The METAREAs bulletins will only include the ice edge. The full ice description of each Canadian marine area is already being broadcast by Canadian Coast Guard Marine Communication Traffic System.
- There is a requirement to produce and broadcast every day, however, during the winter months, the broadcast will consist of a “Null Bulletin” once per week

MetArea Ice Bulletin

- Title Block
- Security Statement
- Describe ice edges of METAREA.

FICN22 CWIS 160300
ICE BULLETIN FOR ARCTIC
METAREA XVII SOUTH OF 75N AT
0300 UTC TUE 16 JUN 2009

SECURITE.

ICE EDGE FM **7100N 14100W** TO
9055N 13300W TO **7200 12800W** TO
7045N 12300W THEN TO **VICTORIA**
IS NR **7140N 11900W**. **ICE N OF**
EDGE.

END

Current Status – Sea Ice Information

- The METAREA software has been running since November in beta testing.
- Formal test roll-out is planned for Spring 2010
- On-going review with scenarios and case studies is underway

Issues

- Definition of “ice edge”?
 - will trace ice or icebergs be included inside the ice edge?
- International co-ordination across METAreas required:
 - Reduce discontinuity of ice edges across boundaries
 - Common approach to communications beyond 80N
- Disclaimer
 - To point to more detailed information that may be available
- Training
 - Coordinated training and back-up planning is needed for the three Issuing Services
- Gaps?
 - Current Canadian products are prepared to support Canadian Coast Guard activities in the Arctic; it is planned that the products from adjacent waters will be suitable for re-issuing
- Future?
 - Use of techniques such as data assimilation and ice models to produce automated ice information products for the METAreas

