

EXPERT TEAM ON SEA ICE – FIFTH SESSION

ETSI-5/GDSIDB-13/Doc.2.3.1(7)

STEERING GROUP FOR THE PROJECT
GLOBAL DIGITAL SEA ICE DATA BANK (GDSIDB) –
THIRTEENTH SESSION

Submitted by: Jürgen Holfort
Date: 15.03.2014
Original Language: ENGLISH
Agenda Item: 2.3
Status: DRAFT 1

OTTAWA, CANADA, 25 TO 28 MARCH 2014

REPORTS BY THE MEMBERS OF THE ETSI

GERMANY

Summary and Purpose of Document

This document provides a brief description of the activities of the German Ice Service between April 2010 and March 2014.

ACTION PROPOSED

The Team is invited to:

- (a) Note and comment on the information contained in the report;
- (b) Take other actions on the issue raised in the report, as appropriate;

References: none

Appendices: none

Germany Report

March 2014

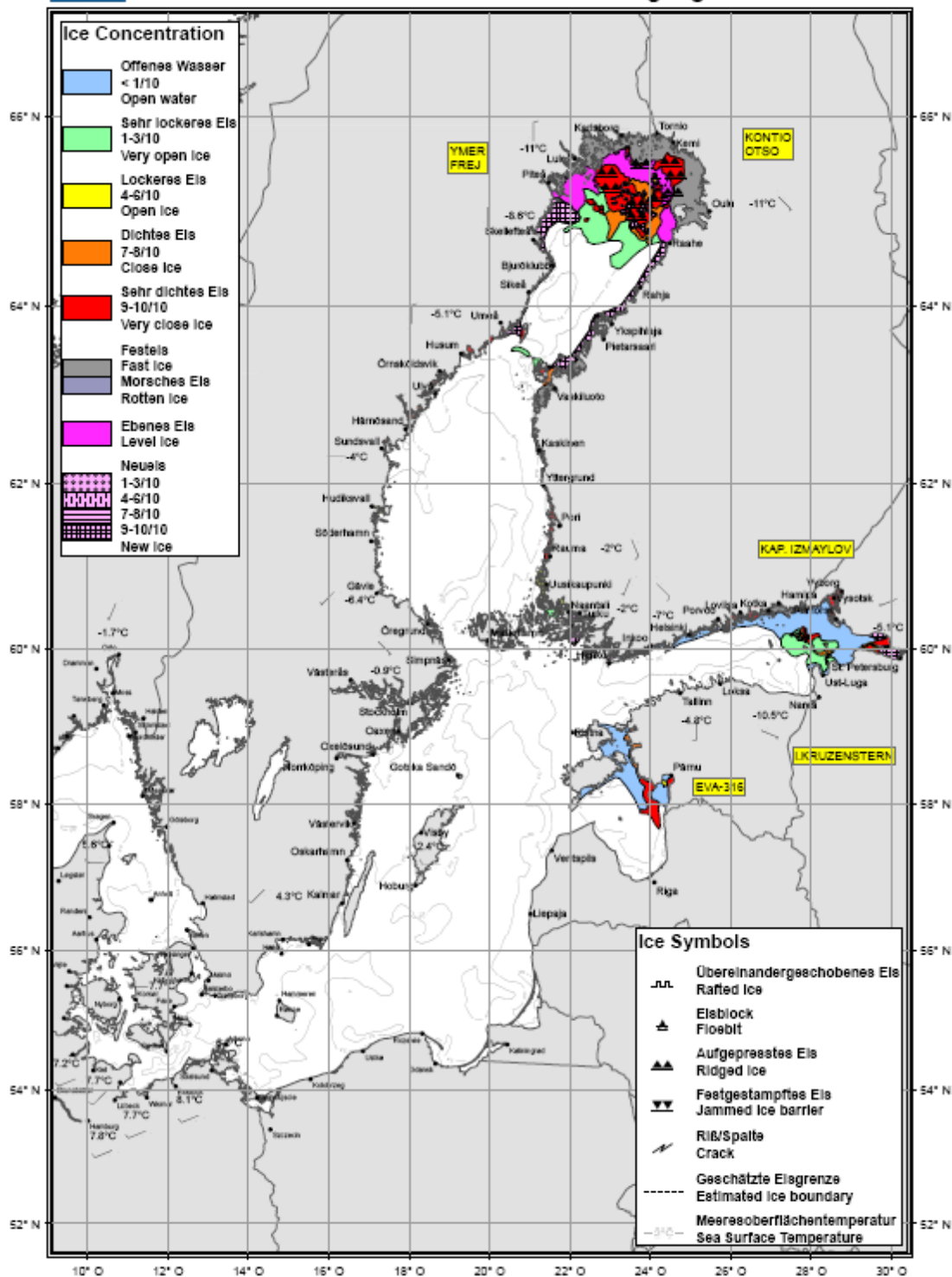
Introduction

1. There were two larger changes within the operational part of the German Ice Service. The ice charts were expanded, an ice chart now has two pages. The first portrays ice concentration, the second stage of development. The colour code for new ice within the concentration map is overlaid with hatching according to the new ice concentration.
 2. Following on an idea discussed on the Baltic Sea Ice Meeting, rotten fast ice is differentiated from normal fast ice by using a bluish grey color. In addition to the ice also sea surface temperature (data from the operational BSH model) and wind as well as air temperature (6 UTC) from several stations around the Baltic is shown. Tables showing the actual traffic restrictions are also included. Excerpt from the ice charts sent out as radio facsimile in black and white version are done anymore. The second change is that all charts are also transformed into the S-411 format and made available to users, although at the moment not actively promoted.
 3. Work planned for the near future is the production of forecast charts from numerical model data, first results are available. It is also planned to use coastal radar stations for ice detection, similar as already in use in Finland, if everything goes according to plans, two stations should be available in the next ice season.
-



Bundesamt für Seeschifffahrt
und Hydrographie

EISKARTE vom 18.03.2014
Übersichtskarte Ostsee
Jahrgang 87 **Nr. 10**





Bundesamt für Seeschifffahrt
und Hydrographie

EISKARTE vom 18.03.2014
Übersichtskarte Ostsee
Jahrgang 87 **Nr. 10**

